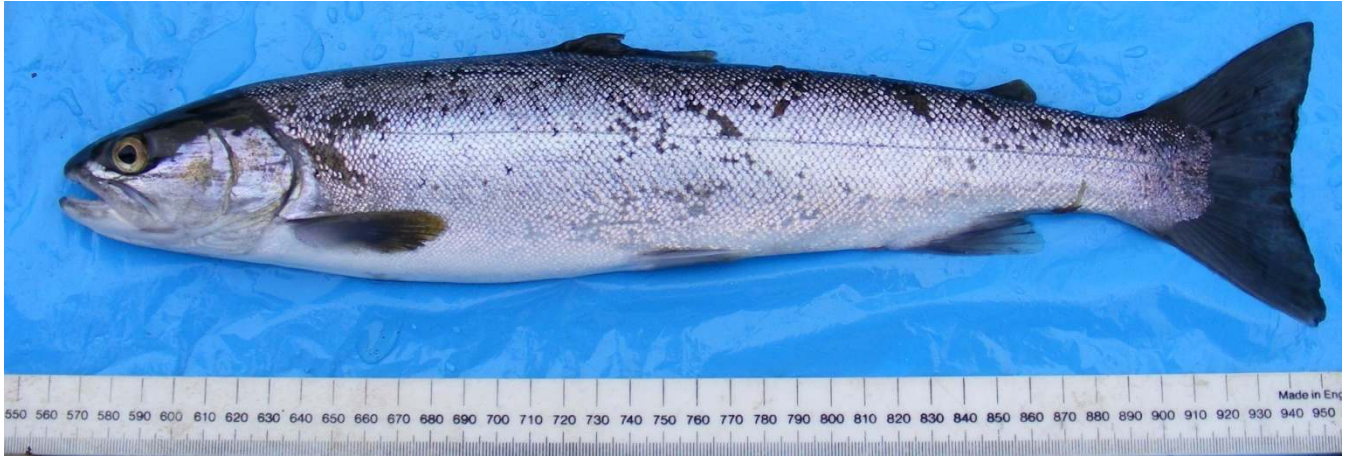
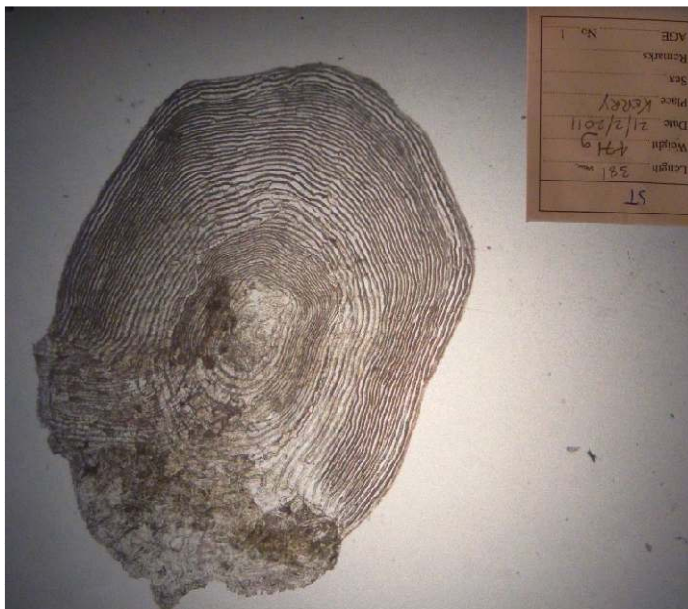


Recaptured Loch Gairloch Sea (estuarine) trout?

(below) Sea trout 381mm, 471g, mouth of River Kerry, Loch Gairloch, 21st February 2011



(below) Sea (?estuarine) trout 465mm, 1230g, mouth of Flowerdale Burn, Loch Gairloch, 4th August 2011



This fish, taken at mouth of River Kerry (below fish farm discharge pipe) in February, was thin with a condition factor of only 0.85. From shape of the healed dorsal fin and positions of black spots, a sea trout of 465mm taken at Flowerdale Bay on 4th August is believed to be the same fish. Although only 84mm longer, the fish had gained 759g in weight, to reach a condition factor of 1.22. On 21st Feb 2011, 14 *L. salmonis* lice were counted on this fish (3 small chalimus, 10 pre-adults and adults, 1 ovigerous females). On 4th Aug 2011, 12 *L. salmonis* (1 chalimus, 10 pre-adults and adults, 1 ovigerous female) were recorded. The scale from sample taken on 4 Aug (right) shows that the trout went to sea after three years in freshwater. Note the additional growth on scale compared to the one taken earlier in February (left). Collection of samples part-funded by the Scottish Government.