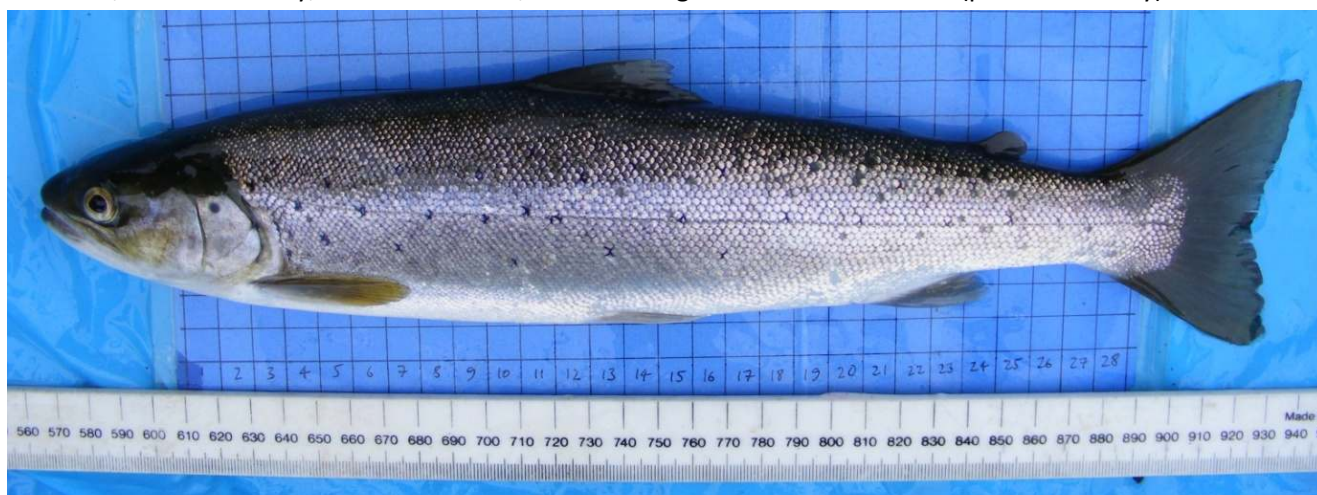
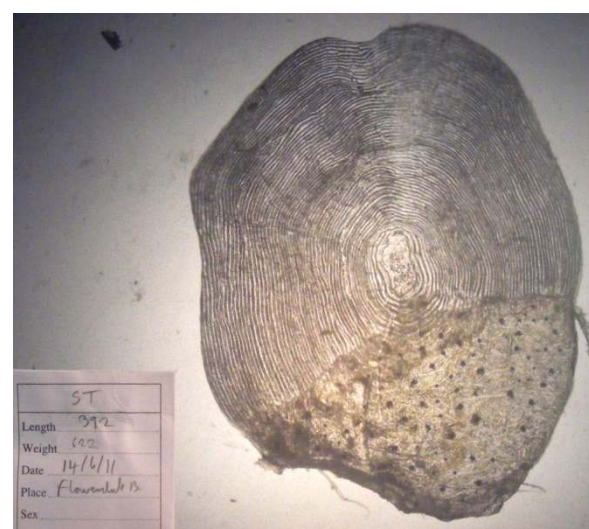
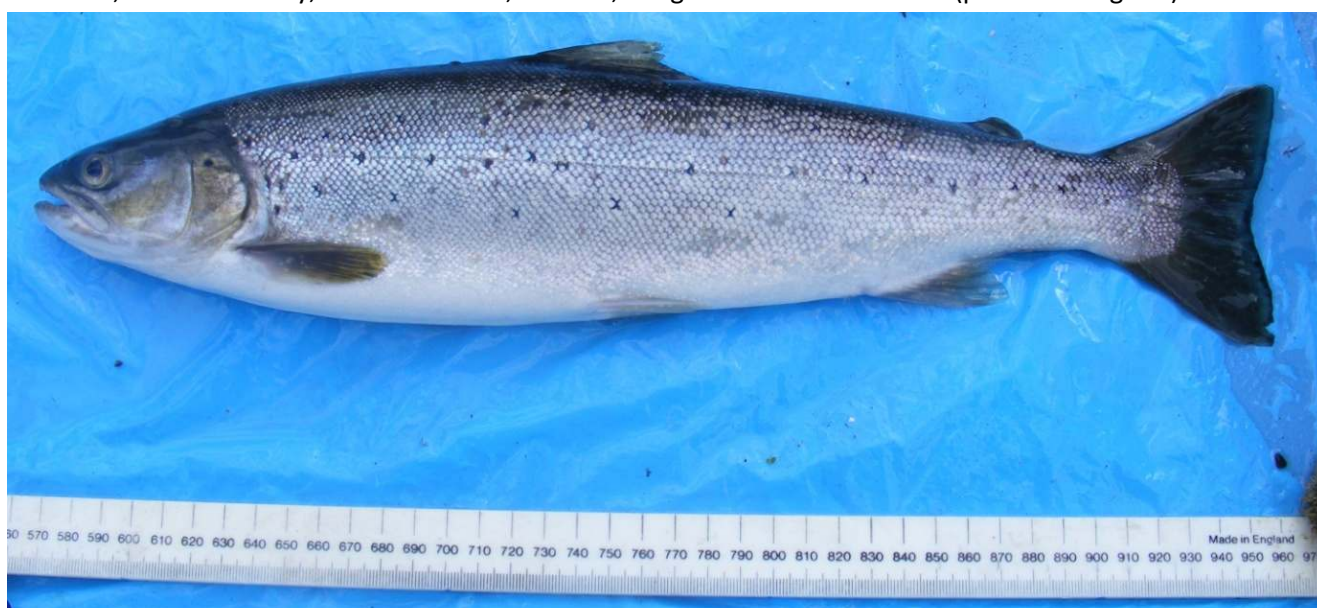


Sea trout, Flowerdale Bay, 18th March 2011, 350mm 416g: condition factor 0.97 (photo J. Tosney)



Sea trout, Flowerdale Bay, 14th June 2011, 392mm, 622g: condition factor 1.03 (photo P. Maguire)



This sea trout was the best conditioned of those caught on the 18th of March 2011, the other 13 fish in the sample varied in length from 259 – 424mm, and condition factors 0.47 – 0.86. It was recaptured on 14th June having grown 42mm in length and 206g between times. The fish is aged at 3 or 4 year old smolt, with 1 maiden year at sea, and ?two spawning marks giving a total age of 6 or 7. The fish had 6 lice on it on 18th March and 15 lice on 14th June 2011, by which time the dorsal fin had become slightly damaged.