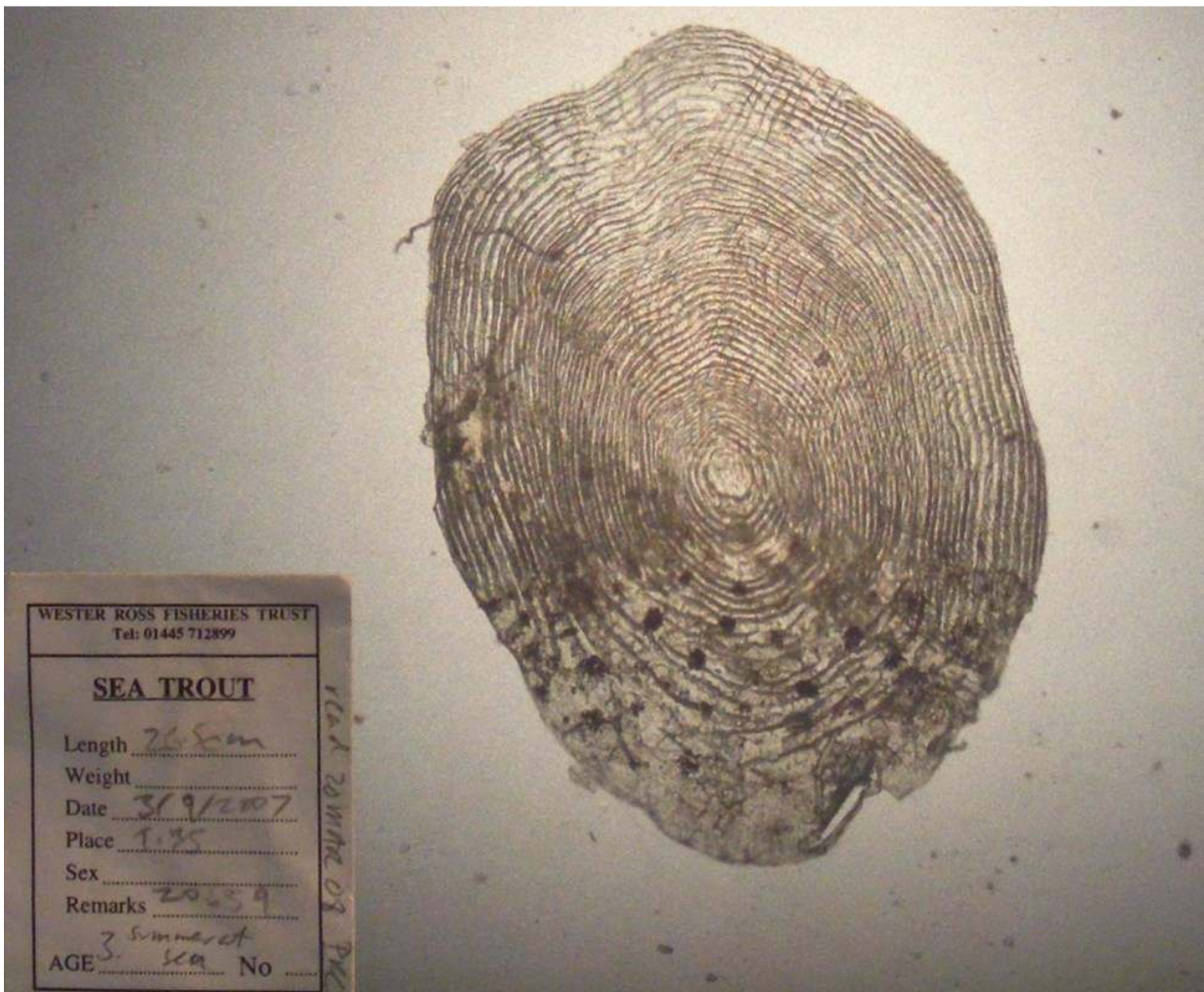


Sea trout, 265mm, upstream trap Tournaig, 3 Sept 2007, Loch Ewe



This fish has been aged as a 3 year old smolt (2nd winter check barely visible), which has spent a summer at sea. The fish has grown well in freshwater; then rather modestly for one summer at sea slowing in preceding weeks. Sea trout caught earlier in the year (May, June and early July) at Poolewe nearby were heavily infected with sea lice. It is possible that this fish was an early return to the river that remained in the lower pools of the fish ladder prior to moving upstream on 3rd September 2007.

No lice were recorded on this fish and the dorsal fin is not obviously damaged.

Sweep netting supported by the Scottish Government via the Tripartite Working Group.