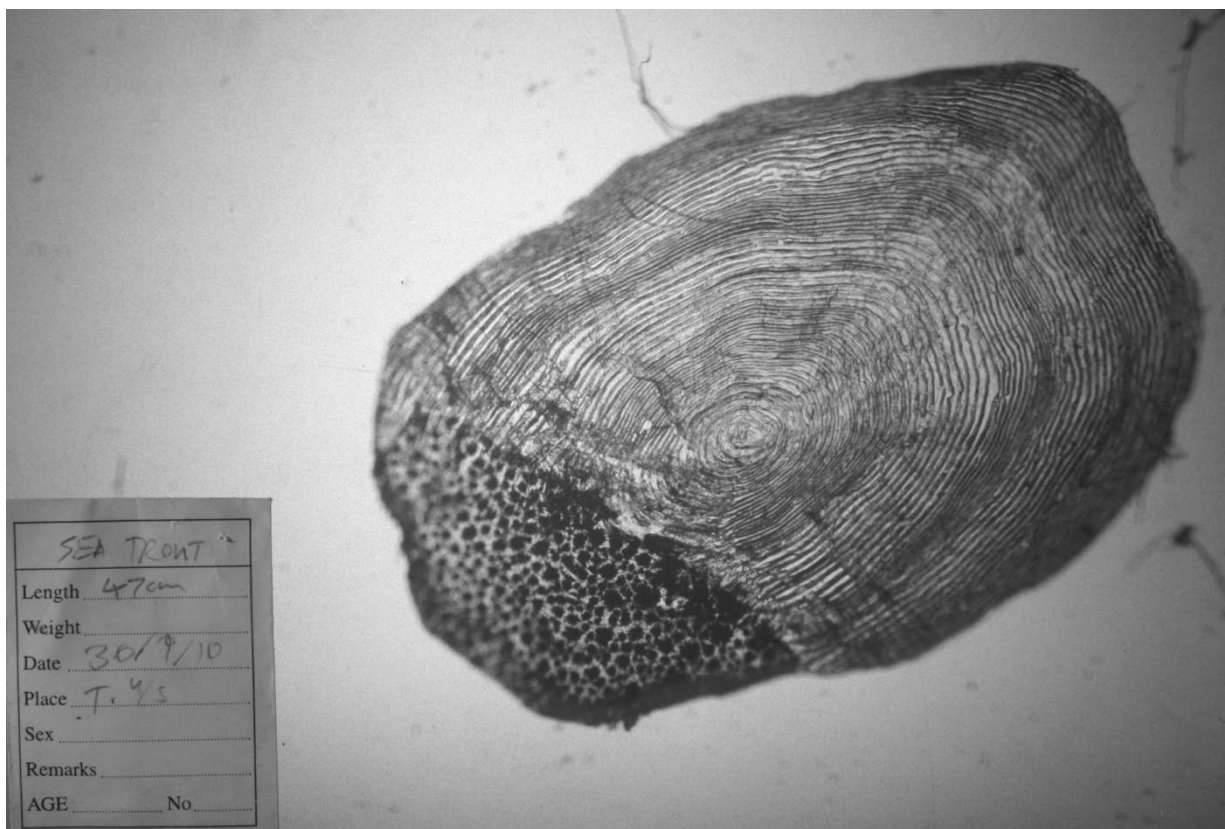


Sea trout, 470mm, caught in the upstream trap at Tournaig, Loch Ewe on 30 September 2010



This fish went to sea as a ?a three year old smolt and grew well in its first summer at sea (2008). It has spent two winters ?in freshwater and a further two good summers (2009 and 2010) at sea. The photograph is not clear enough to see whether there is a spawning mark in its 2nd winter after going to sea. Reading: ?3.2+

No sea lice were seen on this fish.

Photos by Ben Rushbrooke

Sea lice sea trout monitoring supported by the Scottish Government via the TWG. The Tournaig trap was supported by Marine Harvest.