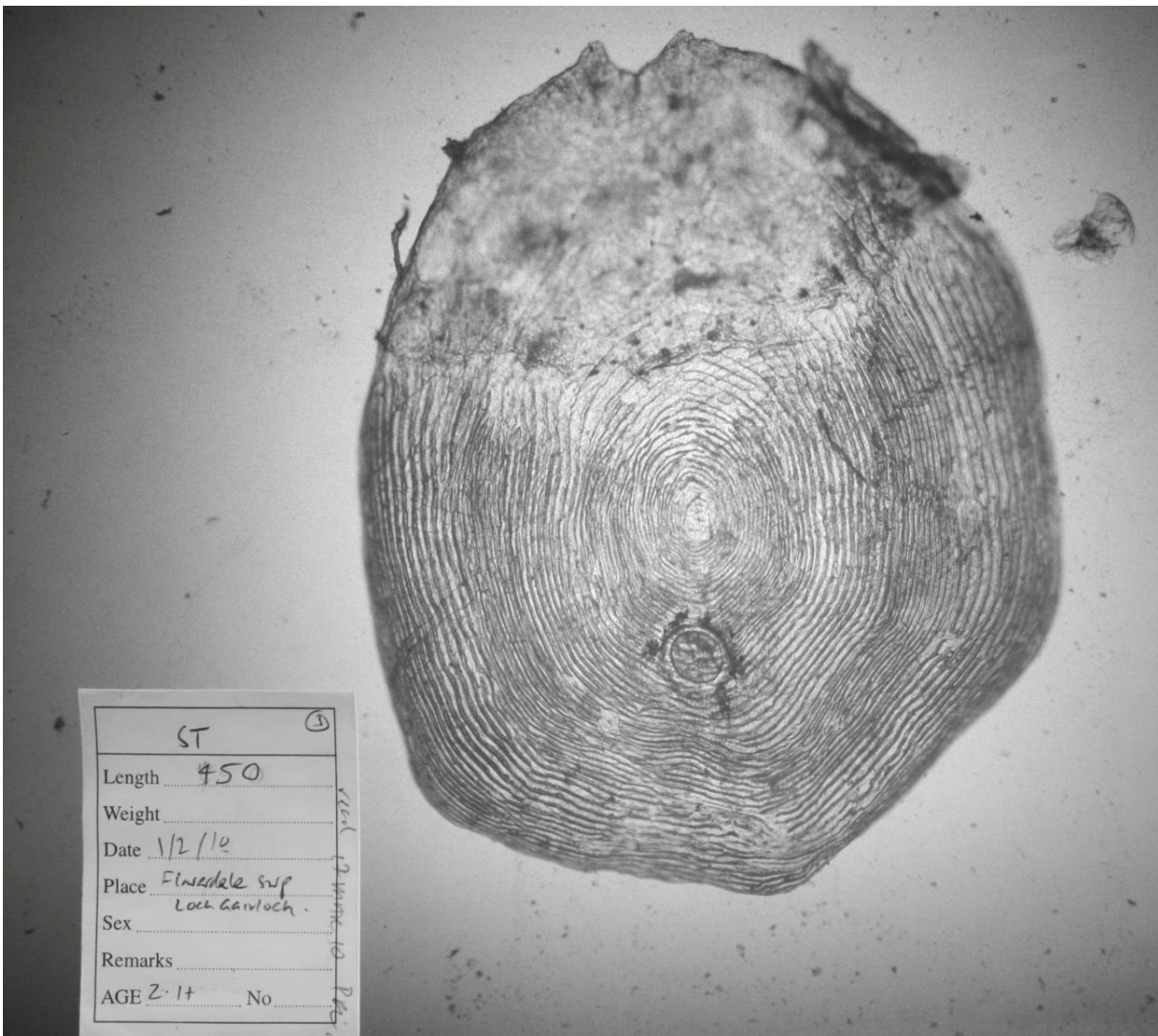


Sea trout, 450mm, taken in WRFT sweep net on 1st February 2010, Flowerdale Burn Estuary, Gairloch.



This fish has been aged as 2 years smolt age, and one (nearly two) winters at sea. It may have spawned after its first and second summer at sea, however a distinct 'spawning mark' cannot be seen. The fish had two pre-adult /adult and 1 ovigerous female *L. salmonis* (Photographs by Ben Rushbrooke).

Sweep netting supported by the Scottish Government via the Tripartite Working Group.