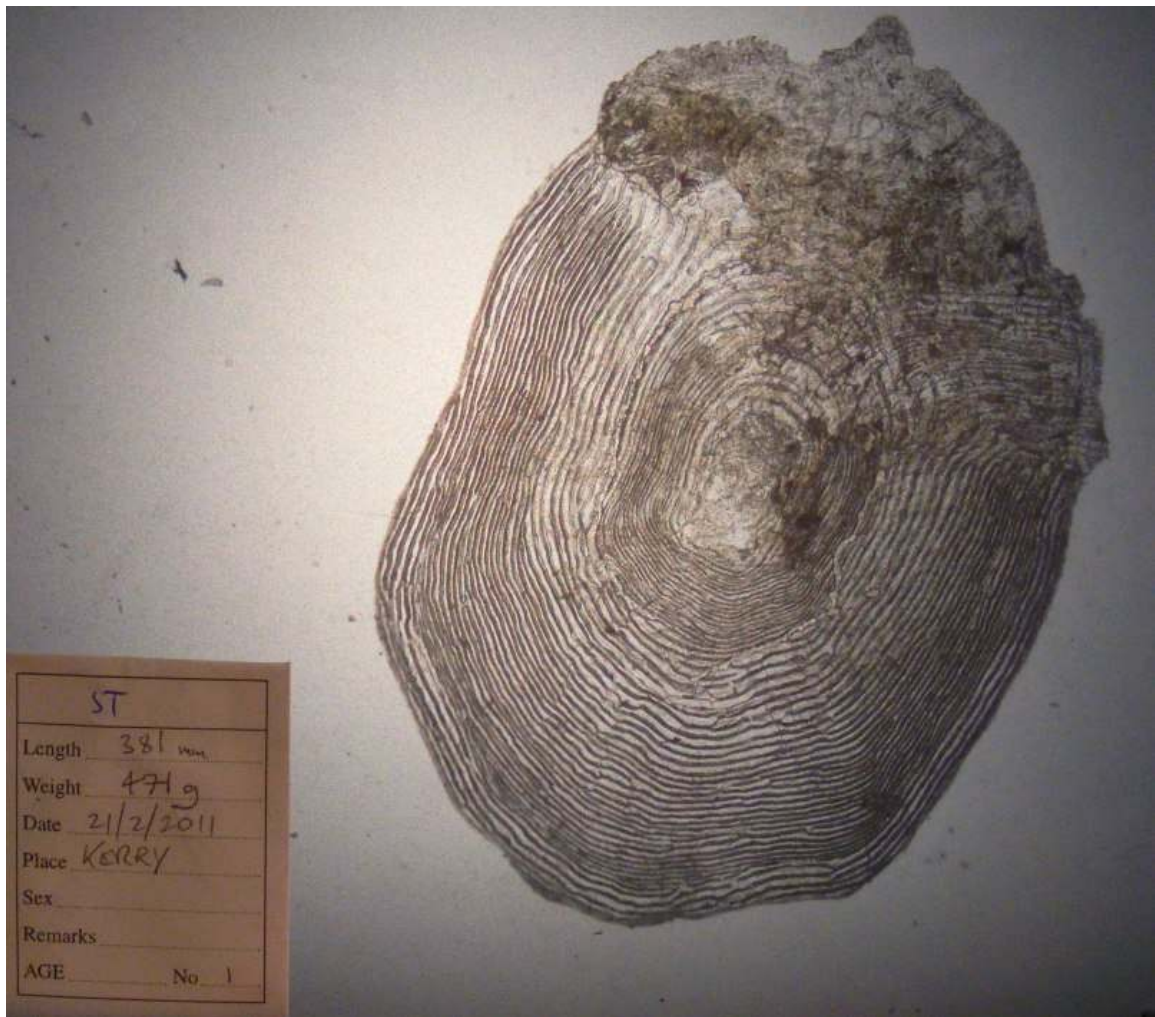


Sea trout, 381mm, 471g, River Kerry mouth, 21st February 2011



This fish, taken at mouth of River Kerry (below fish farm discharge pipe) in February, was thin with a condition factor of only 0.85. Freshwater age is uncertain because all scales were 'replacements', possibly a 2 year old smolt of approx 140mm. In its first summer at sea (2009), the fish has grown quickly, reaching an extrapolated length of 352mm by the end of the following winter. However, in summer 2010 (4 or 5 wide outer circuli), growth has been more modest. Reading ? .1+.

There were 14 *L. salmonis* lice were counted on this fish (3 small chalimus, 10 pre-adults and adults, 1 ovigerous females); the dorsal fin was almost completely eroded (but healed).

Sweep netting supported by the Scottish Government via the Tripartite Working Group.