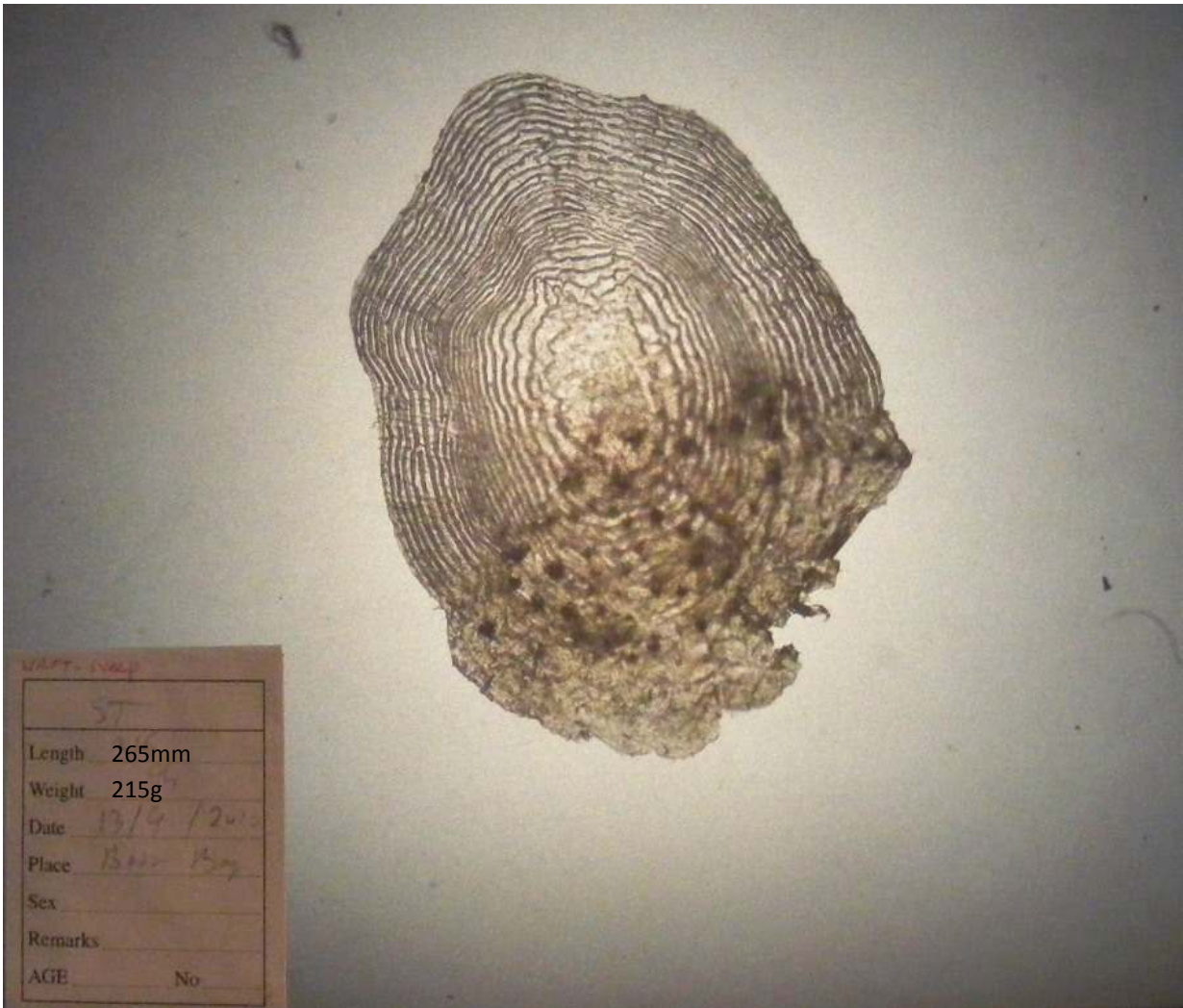


Sea trout, 265mm, and sprats taken in WRFT sweep net on 13th September 2010, Boor Bay, Loch Ewe.



All the scales take from this fish were missing their centres. Sea growth was modest for the time of year, but the fish had been growing quickly at time of capture. The reading is ? .0+ [unknown smolt age, first summer at sea]

There were 6 *Lepeophtheirus salmonis* sea lice on this fish (0 chalimus, 6 preadults/adults, 0 ovigerous female), with 1/3 eroded dorsal fin.

Sweep netting supported by the Scottish Government via the Tripartite Working Group.